

capture

## Stream LE

Stream LE provides you with an intuitive, consistent interface with a streamlined step-by-step workflow. Select the video and audio inputs you will be using (a live source, existing media files), and the formats you want to output to. Stream LE includes preset codec profiles for common encodes, and you can create your own reusable profiles. You can perform as many simultaneous real-time encodes as your system's CPU horsepower will allow. If you want to closely manage the encoding process, you can interactively tweak video and audio parameters including proc amp controls, gamma correction, cropping, graphic overlay, de-interlacing, noise reduction and audio controls. Choose your output destination from a variety of options including live streaming, archive files (which can be automatically referenced by an HTML file), or distribution via the optional Copper plug-in for secure, high-speed delivery over the Internet or private networks. Support for popular Windows Media DRM license providers is fully integrated. To encode again with these settings later, just load your project and hit the Start button – easy, one-click encoding.

The Stream software is also highly configurable for the expert user. It uses a system of keyword shortcuts (tags) which you control, shortening the amount of data entry necessary for each job. Tags can include company and author information, time and date stamps, file info, or anything else you need for your job.

transcode

## StreamPro

Add more power to your Stream system with StreamPro. RS422 deck control and logging provide frame-accurate, automated capture from professional VTRs. The logger can also be installed on remote machines to create capture logs for later use on your Stream system. Multiple automatic and user-defined timecode modes are supported, with robust broken timecode support.

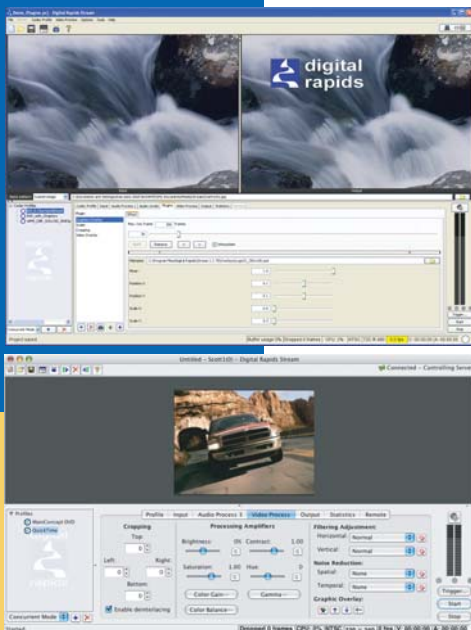
stream

Batch Encoding mode lets you encode a live input to multiple high-resolution or high bit-rate files when you've exceeded your CPU's real-time encoding power. It ingests once, then transcodes the result to multiple formats automatically. Clip Lists offer batch transcoding of multiple files between formats, optionally concatenating them into a single output file. StreamPro supports image sequences as input or output, and the included Sorenson ACE expands the formats you can encode with AVC (H.264), Flash 7 and more. An additional live streaming format, MPEG2 over UDP or RTP, provides high quality video with low latency. Keyframeable video processing plug-ins including graphic and video overlay and color space conversion can be used during live ingest or transcoding. Additional output options can automatically notify you or your clients by e-mail when encoding is complete, or automatically distribute the output files to one or more FTP servers. 192-bit AES encryption provides security for your output files. Direct output to DVD can use your deck capture log to automatically generate DVD chapter points.

For collaborative work groups, StreamPro features watch folders. Each time a file is added to a watch folder, the preset encode will start automatically. Combine this with the powerful publishing feature to empower your content creators, allowing them to publish to your web site, intranet or FTP server by simply dropping their finished content into your watch folder.

## StreamEnterprise

StreamEnterprise software allows you to use a Java based, password controlled, remote control application to control your StreamEnterprise-based servers from any system that supports Java 5 (including Mac OSX, Linux, Unix and Microsoft Windows). Manage projects, set profiles, start, stop and monitor any number of StreamEnterprise systems with the remote control Stream software that looks and acts just like the local interface. You can remotely monitor the incoming live video and audio, with live control of the video proc amps (brightness, contrast, etc.), cropping, filtering and audio settings. Remote live monitoring means you never have to worry about poor-quality encoding because you couldn't see that the video or audio processing controls weren't properly adjusted.



## Specifications:

• = included features   o = optional features   ♦ = new feature for version 2.x

### Input Functionality

	LE	Pro	Enterprise
Live video inputs	•	•	•
Live audio inputs (multi-channel)	•	•	•
AVI	•	•	•
MPEG 1/2*, VOB and MPEG4	•	•	•
QuickTime file and reference	•	•	•
Windows Media	•	•	•
WAV and MP3	•	•	•
Deck control	o	•	•
Batch Mode (live capture, auto transcode)		•	•
Timecode (auto or time of day)		•	•
Image Sequence input (SD, HD, Film)	•	•	•
Watch Folder for clips		♦	♦
Multi-clip in to multi output (clip list)		♦	♦
Multi-clip in to single output (concatenate)		♦	♦

### Audio Feature Set

	LE	Pro	Enterprise
Multiple channel audio	•	•	•
Volume	•	•	•
Sample rate conversion	•	•	•
7-Band Parametric EQ (SD boards)	•	•	•
Dynamic Range Exp/Comp (SD boards)	•	•	•
Bass/Treble (SD boards)	•	•	•

### Video Processing Controls

	LE	Pro	Enterprise
De-interlacing (Hardware)	•	•	•
Horizontal/Vertical Filtering (Hardware)	•	•	•
Spatial Noise Reduction (2D) (SD boards)	•	•	•
Temporal Noise Reduction (3D, Hardware)	•	•	•
Proc Amp Controls (Hardware)	•	•	•
Gamma Correction (Hardware)	•	•	•
Software video processing plugins		♦	♦
Hardware scaling, cropping, graphic overlay	•	•	•
Software scaling, cropping, graphic overlay		♦	♦
Software video overlay		♦	♦

### Project Control

	LE	Pro	Enterprise
Multi-card/server project monitoring			•
Live remote input video/audio monitoring		•	•
Remote deck timecode monitoring		♦	♦

\* MPEG 1/2 optional for the DRC-500, standard for higher boards  
 \*\* MPEG4 with QuickTime in v1.5, Sorenson ACE in StreamPro 2.0 or higher  
 \*\*\* File output only, not live streaming  
 \*\*\*\* VBI capture with DRC-1000 or higher  
 \*\*\*\*\* Copper Receiver at higher data rates optional

### Output Formats

	LE	Pro	Enterprise
Microsoft WM7/8/9; SMPTE VC-1	•	•	•
Real, Real Helix 9, 10	•	•	•
Quicktime 6, 7 (excluding AVC/H.264)	•	•	•
MPEG 1/2* (4:2:0/4:2:2 up to 80Mbps)	•	•	•
MPEG2 files meeting CableLabs® VOD specs	♦	♦	♦
MPEG4 **	•	•	•
WAV (multi-channel)	♦	♦	♦
Image Sequence		•	•
Image Sequence at deck in-points		♦	♦
AVI	•	•	•
DivX (AVI)	o	o	o
MPEG2 streaming (UDP/RTP w/RTSP)	o	♦	♦
Sorenson ACE (MP4,AVC/H.264,MOV,Flash7,MP3)****	o	♦	♦
AC3 (Dolby Digital) stereo or surround	o	o	o
Closed caption file (SCC, SAMI)****	♦	♦	♦

### Triggers and External Control

	LE	Pro	Enterprise
Duration Encode	•	•	•
GPI Trigger	•	•	•
Keystroke Trigger	•	•	•
LTC Timecode Trigger (SD boards)		♦	♦
Java based remote control interface			•

### Publishing

	LE	Pro	Enterprise
Template based publishing interface	•	•	•
Per codec simple log publishing	•	•	•
Per project log publishing (all codecs)		•	•
Persistent log publish file (all codecs)			•
DVD Publishing		♦	♦
E-mail notification		♦	♦
FTP distribution		♦	♦
Copper distribution plugin for Stream	o	o	o

### Other Functionality

	LE	Pro	Enterprise
WDM (Windows Driver Model) (SD boards)	•	•	•
VBI capture (Closed Caption support)****	•	•	•
High Level API	•	•	•
Encrypt/Decrypt media files		♦	♦
Copper Receiver (2Mbps)*****	♦	♦	♦
Forensic Watermarking (Philips)	o	o	o
WM9 DRM (SyncCast, ServeCast, thePlatform, Entriq)	♦	♦	♦

capture

transcode

stream



### North America

Digital Rapids Corporation  
 100 Steelcase Road East  
 Unit 201  
 Markham Ontario L3R 1E8  
 Canada

(905) 946-9666 x212 voice  
 (416) 352-0716 fax  
 sales.na@digital-rapids.com

### Europe

Digital Rapids Corporation Ltd.  
 Passfield Business Centre  
 Lynchborough Road  
 Passfield, Hampshire  
 GU30 7SB, UK

+44-1428-751012 voice  
 +44-1428-751013 fax  
 sales.eu@digital-rapids.com

### Asia Pacific

Digital Rapids Pty. Ltd.  
 16 Marie Dodd Crescent  
 Blakehurst  
 NSW 2221  
 Australia

+61 2 9546 1300 voice  
 +61 2 9594 1773 fax  
 sales.ap@digital-rapids.com



*focused on the future of digital video*

www.digital-rapids.com

Copyright 2006 Digital Rapids Corporation. All rights reserved. Digital Rapids, the Digital Rapids logo, Stream, Stream LE, StreamPro and StreamEnterprise are trademarks or registered trademarks of Digital Rapids Corp. CableLabs is a registered trademark of Cable Television Laboratories, Inc. All other trademarks are the property of their respective holders. Features, pricing, availability and specifications are subject to change without notice.